

Welding Gauge

Item No. : WG-MG08



MG-8 (Bridge Cam Gauge)

- General Linear measurement up to 2" (50mm), angle of preparation 0~60°
- Reading precision : $\pm 0.2\text{mm}$
- Angle : $\pm 1^\circ$
- Material : stainless steel
- Scale : in Inch & mm

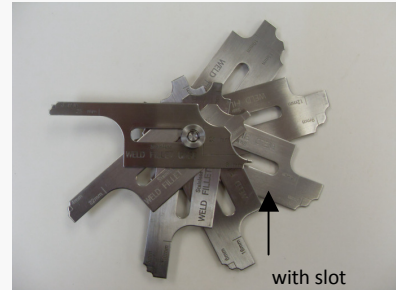
Item No. : WG-MG11



MG-11 (7-PC Fillet Weld Gauge)

- Weld fillet sizes in inches : 1/8" ~1" (3.2~25.4mm)
- Specs : with slot, & without slot
- Reading precision : $\pm 0.03\text{mm}$
- Material : stainless steel

Item No. : WG-MG11-S



MG-11-Metric (7-PC Fillet Weld Gauge)

- Weld fillet sizes in metric : 3~25mm
- Specs : with slot, & without slot
- Reading precision : $\pm 0.03\text{mm}$
- Material : stainless steel

Item No. : WG-PF-2P



Pocket Fillet Weld Gauge (1 set of 2 pcs)

- Material : stainless steel
- Scale : in inch or mm (specify when ordering)

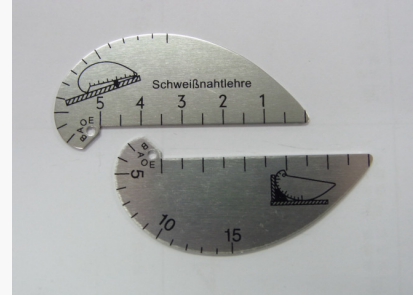
Item No. : WG-PF-4P



Pocket Fillet Weld Gauge (1 set of 4 pcs)

- Material : stainless steel
- Scale : in inch or mm (specify when ordering)

Item No. : WG-AP



Aluminium Plate

- Material : Aluminium
- Scale : in mm

Item No. : WG-FS



Fan-shaped 12 leaves

- Gauge for 90° edges
- Measuring range : 3~12mm
- Material : stainless steel
- Scale : in mm

Item No. : WG-P-4A



Precision 60°, 70°, 80°, 90° angles

- Gauge for flat & edge-seams
- Measuring range : 0~20mm
- Material : stainless steel
- Scale : in mm

Item No. : WG-P-4A-D



Precision 60°, 70°, 80°, 90° angles (Digital)

- Gauge for flat & edge-seams
- Measuring range : 0~20mm
- Material : stainless steel
- Scale : in inch & mm

Welding Gauge

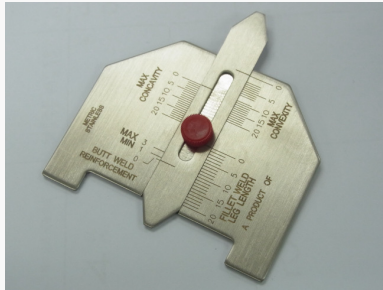
Item No. : WG-S



Seltor

- Special gage for rapid check
- Reading precision : $\pm 0.1\text{mm}$
- Material : stainless steel
- Scale : in mm

Item No. : WG-AWS



A.W.S. (Automatic Weld Size)

- Measures permissible tolerance of convexity, concavity & reinforcement
- Material : stainless steel
- Scale : in Inch or mm (specify when ordering)

Item No. : WG-HILO-S



Hi-Lo Gauge (Single Purpose)

- measures pit-depth, weld height and "Hi-Lo"
- Material : stainless steel
- Scale : in Inch or mm (specify when ordering)

Item No. : WG-HILO-M



Hi-Lo Gauge (Multi Purpose)

- measures internal misalignment of pipe, pipe wall thickness, fit-up gap, fillet weld size and crown height of butt weld
- Material : stainless steel
- Scale : in Inch & mm (in inches on 1 side & metric on opposite side)

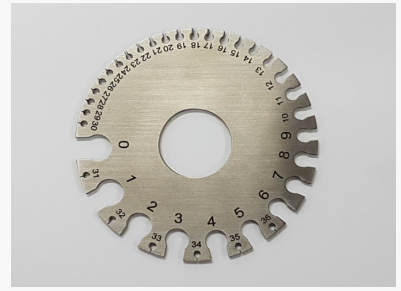
Item No. : WG-MTG



Material Thickness Gauge

- Measuring range : .0239" ~ .3125" for Metal, .024" ~ .035" for Wire
- Material : stainless steel
- Scale : in inch

Item No. : WG-WG-84



Wire Gauge

- Measuring range : 0~36 gauge Sheet Metal and Wire on 1 side & .007" ~ .3125" on the other
- Material : stainless steel
- Scale : in inch

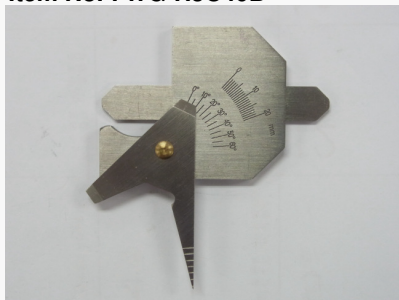
Item No. : WG-E112H



Elecometer 112 Hexagonal

- Measuring range : 25~3000 μm
- Material : stainless steel
- Scale : in mm

Item No. : WG-HJC40B



HJC40B

- Measuring weldments groove angle, weld bead height, gap between weldments and etc
- Material : stainless steel
- Scale : in mm

Item No. : WG-T



Taper

- Measuring range : 1~15mm
- Material : stainless steel
- Scale : in inch & mm

GRACEDUTY COMPANY LIMITED

Room 1102 - 1104, 11/F., CRE Centre,
 889 Cheung Sha Wan Road, Kowloon, Hong Kong, China
 Tel: (852) 2420-5808 (6 Lines) Fax: (852) 2420-5507
 E-mail : welding@graceduty.com.hk http://www.graceduty.com.hk